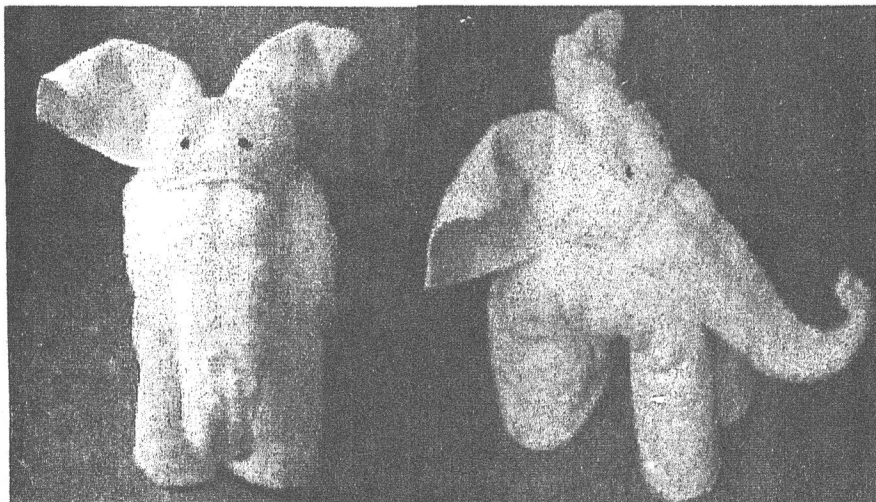


TOWEL ANIMAL

STANDING ELEPHANT



Materials needed: 1 Bath towel & 1 Hand Towel

Step 1: Making of the Body

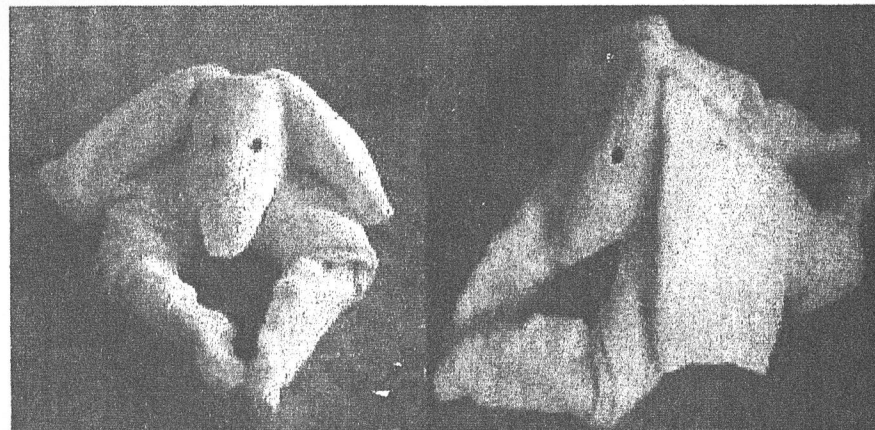
- Place the bath towel on a flat surface; fold each side's lengthwise about 2-3 inches inwards.
- Vertically roll both ends of the towel until it meets in the center
- Bend the roll towel into half
- Put it in a standing position making sure it stands firmly
- This is the body of the elephant

Step 2: Making of the Head

- Place the mid portion of the hand towel on a hook or you can use the finger of another person
- Roll both ends of the towel inwards until it gathers in the centre. Remove it from the hook and fold the upper portion of the towel at least 2-3 inches downwards
- Then hold the pointed part and roll it upwards like making small circles to form the elephant's trunk.
- Arrange it nicely and place it on top of the Elephants body. Now you can put paper cut outs for the eyes and any other decorative items

TOWEL ANIMAL

DOG



Materials needed: 1 Bath towel & 1 Hand Towel

Step 1: Making of the Body

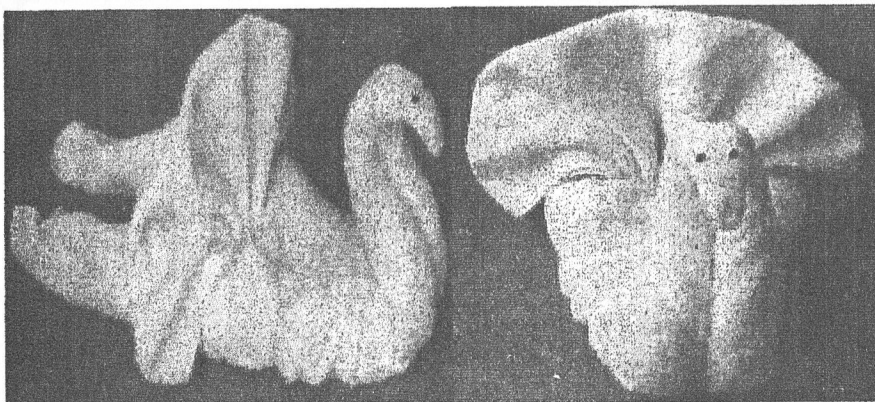
- Place the bath towel on a flat surface, gather both sides of the towel and bring it to the middle.
- Start rolling the towels from the ends until it reaches the centre.
- Bring around the ends on both sides to make a U shape.
- This forms the body of the dog

Step 2: Making of the Head

- Fold the Hand towel into 3 equal parts (length wise)-(Tri-fold).
- Make a pyramid shape by folding both sides to the centre (both sides with overlap ends downwards).
- Then fold it to the centre and fold the overlap ends to the sides, making the ears.
- This forms the head. Then place it on top of the body.
- You can add small pieces of cut out paper to make the eye or any other decorative items such as sun glasses, caps etc.

TOWEL ANIMAL

Swan



Materials Needed: 1 Bath towel & 1 Hand Towel

Step 1: Making of the Body

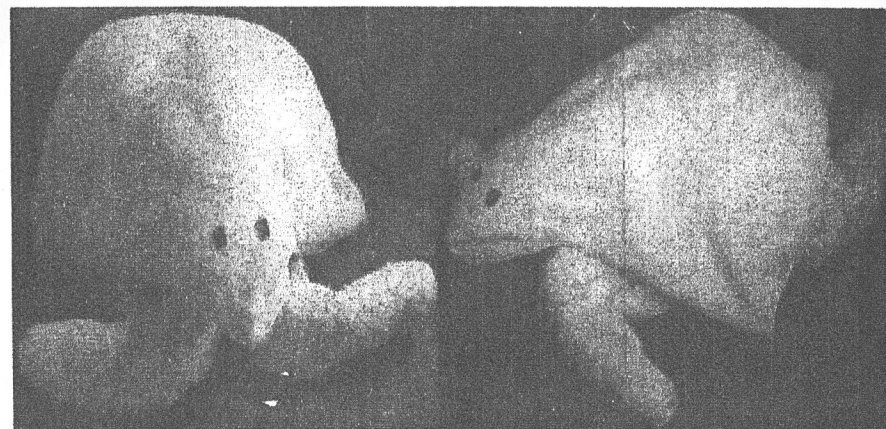
- Place the mid portion of the bath towel on a hook (horizontally)
- Roll both ends inwardly until it meets in the center. Make sure it is firm enough to be moulded before you remove it from the hook.
- Place it on a flat surface, then hold the pointed part of the rolled towel and mould it into an "S" structure.

Step 2: Making of the Tail.

- Place the hand towel on a flat surface and fold it into half
- Then start folding it from one side with a 2-3 inches lap. It should be turning from one side to the other with the same fold (vice versa). Continue folding until you get to the other end.
- While you are holding the folded towel at one end. Arrange the other end to look like a fan.
- Place the fan at the back of the "S" shape structure. Make sure it spreads out nicely.
- Add some paper cut outs for the eyes and you can also add some other decorative items.

TOWEL ANIMAL

TURTLE



Materials Needed: 2 Bath towels

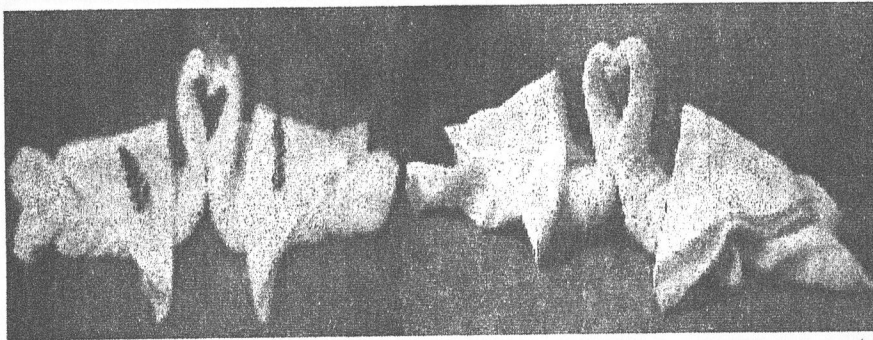
Step 1: Making of the Body

- Place the bath towel on a flat surface. Roll one end up to the middle. Fold it in half and bend both ends to make the shape of a "W".
- Roll the other part up to the middle and gather both ends making it into a "U" shape.

Step 2: Making of the Shell

- Fold the towel into four equal parts "cross-wise" and fold it in half making it into a square. Place it on top of the body making a diamond shape
- Shape the corners, the head part in between the flipper and insert both sides to form the shell

TOWEL ANIMAL KISSIN' DOVES



Materials Needed: 2 Hand Towels & 2 Wash cloths

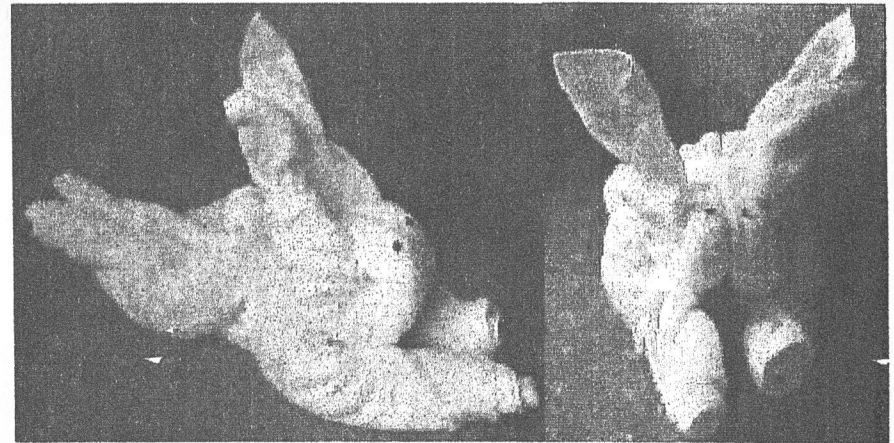
Step 1: Making of the Body

- Place the mid portion of the hand towel on a hook (Horizontally)
- Roll both ends inwardly until it meets in the center. Make sure it is firm enough to be molded
- Hold the pointed part of the rolled towel and mould it into an "S" structure, then place it on a flat surface.
- Follow the same procedure with the other hand towel.
- Place the 2 moulded (S shaped) towels face to face. Make sure that both ends touch to each other to form a heart shape.

Step 2: Making of the Wings

- Fold the washcloth in to a triangle.
- Then pull the middle upwards to form the wings.
- Place the folded washcloth at the back of the body.
- You can now put some decorative items such as flowers, paper cut outs for the eyes, etc.

TOWEL ANIMAL RABBIT



Materials Needed: 1 bath towel & Hand towel

Step 1: Making of the body

- Place the bath towel on a flat surface. Roll both ends of the towel until it meets in the middle.
- Bend the rolled towel in half. Find the four ends of the towel and pull it out
- By holding the opposite end of the towel, firmly pull it apart from each other to form the body and the legs

Step 2: Making of the Head

- By using the hand towel. Hold it horizontally, place the centre of the towel on a hook
- Hold both ends and roll it inwards until it's firm enough to be moulded
- Hold the pointed part and pull it up and around between the frail of the towel and tuck the end tightly between the split of the towel so it wouldn't get loose
- Arrange the frail ends nicely to form the ears. Now you can put this on top of the body. Use some paper cut out to make the eyes or some other decorative items.